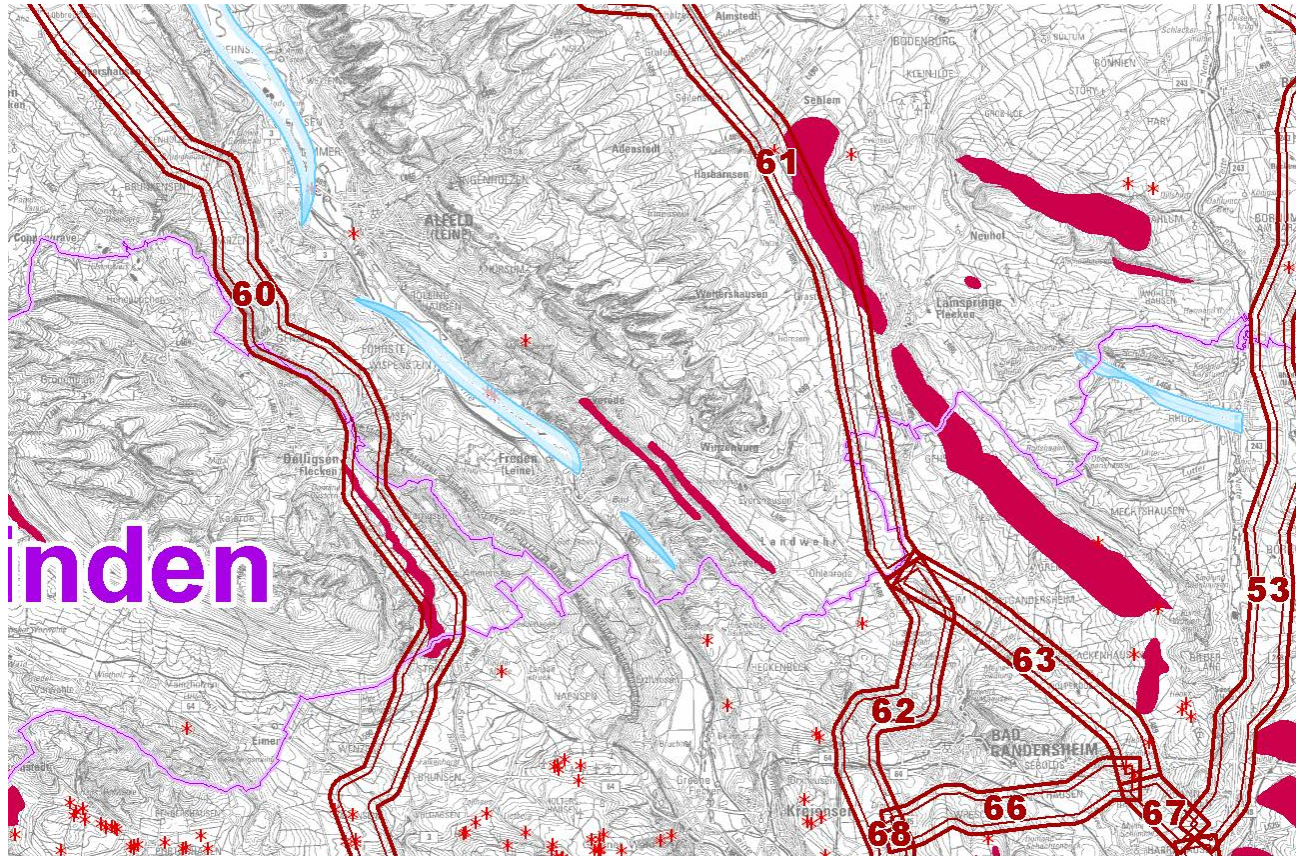






## Erdfälle/Sulfatkarst-Gebiet im Bereich Delligsen (Landkreis Holzminden)



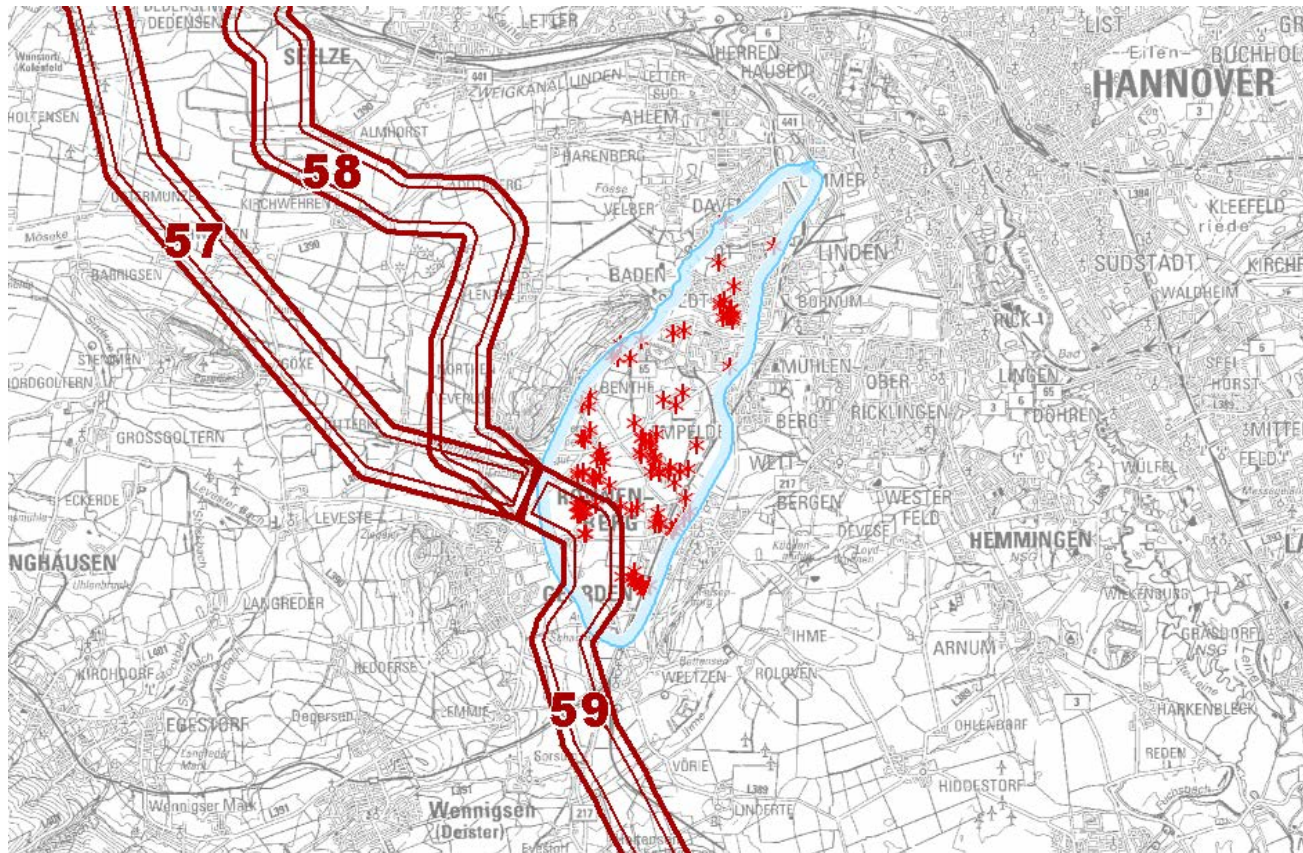
### Legende

-  SuedLink-Korridor
-  Ingenieurgeologische Karte von Niedersachsen 1 : 50 000 - Salzstockhochlagen
-  Ingenieurgeologische Karte von Niedersachsen 1 : 50 000 - Erdfallgefährdete Gebiet
-  Sulfatkarst


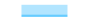


Quellen: LGLN 2016, LBEG 2016

Kartenerstellung: Amt für regionale Landesentwicklung Leine-Weser 2016

## Erdfälle-Gebiet im Bereich Ronnenberg/Gehrden (Region Hannover)



### Legende

-  SuedLink-Korridor
-  Ingenieurgeologische Karte von Niedersachsen 1 : 50 000 - Salzstockhochlagen
-  Ingenieurgeologische Karte von Niedersachsen 1 : 50 000 - Erdfallgefährdete Gebiet
-  Sulfatkarst

Quellen: LGLN 2016, LBEG 2016

Kartenerstellung: Amt für regionale Landesentwicklung Leine-Weser 2016